



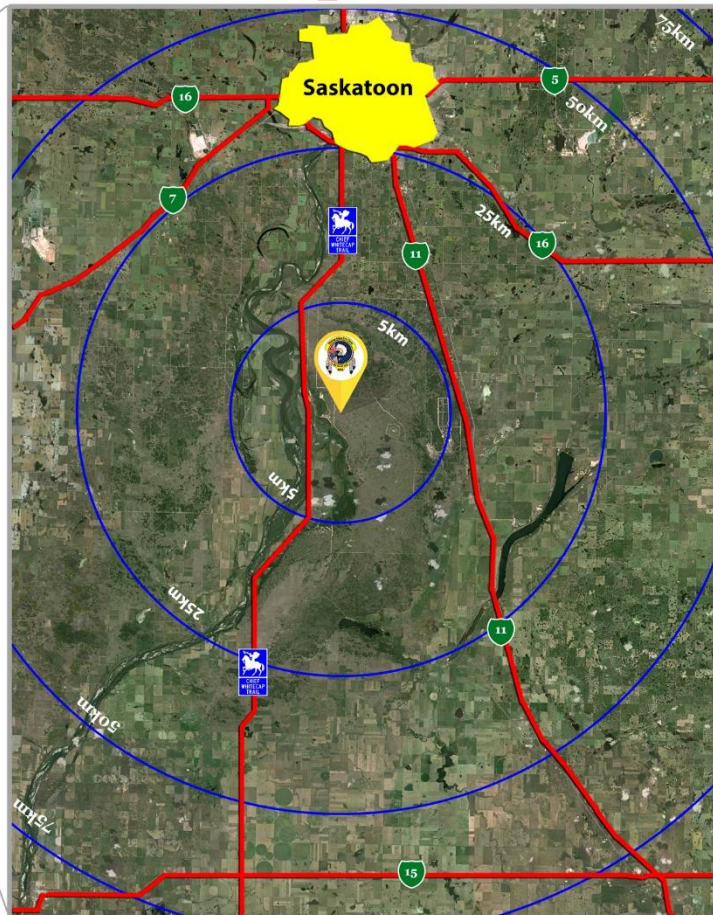
# ***Dakota Dunes Resort Development***



***IITC Presentation***



# Whitecap Dakota First Nation

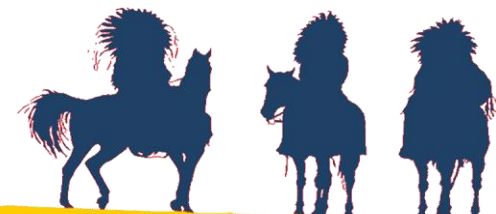


4,913.5 acres

26 kms south of Saskatoon, Saskatchewan's largest city.

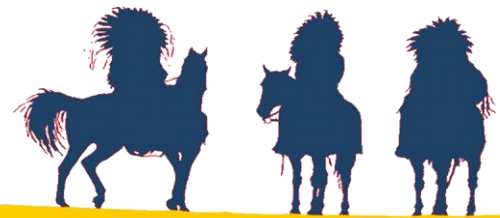
Primary weight highway access.

30 minutes to international airport.





# 5 P's of Whitecap Tourism Development





# Plan





# Profit



DAKOTA DUNES  
RESORT HOTEL





# Persist





# Partner

Gaming

Indigenous Tourism Corridor

DAKOTA DUNES  
CASINO



*Wanuskewin*  
Heritage Park

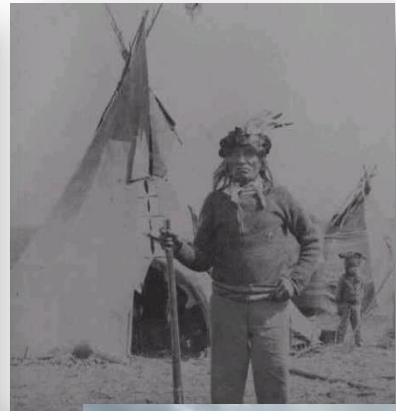
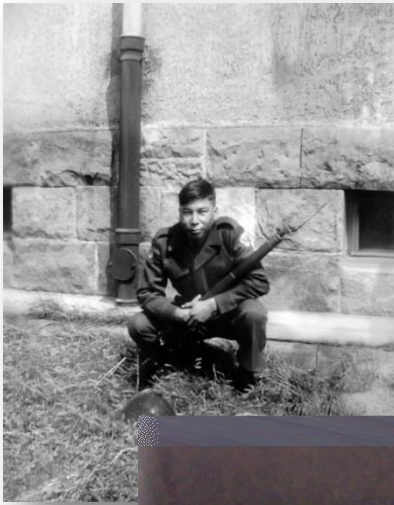


Beardy's & Okemasis Cree Nation





# Preserve





## Development Results

\$100 million of capital investment

Over 1 million tourist visits annually

Over 650 jobs created

Sustainable revenue streams





# ***Strengthening Community***

**Pidamaya!  
Thank You!**

## ***Building Opportunity***